

A Heuristics Approach for Classroom Scheduling using Genetic Algorithm Technique

Izah R. Ahmad*, Suliadi Sufahani, Maselan Ali and Siti N.A.M. Razali

¹*Department of Mathematics and Statistics, Faculty of Applied Sciences and Technology,
Universiti Tun Hussein Onn Malaysia, 86400 Parit Raja, Johor, Malaysia

Received 30 September 2017; accepted 4 December 2017; available online 12 December 2017

Abstract: Reshuffling and arranging classroom based on the capacity of the audience, complete facilities, lecturing time and many more may lead to a complexity of classroom scheduling. While trying to enhance the efficiency in classroom planning, this paper proposes a heuristic approach for timetabling optimization. A new algorithm was produced to take care of the timetabling problem in a university. The proposed of heuristics approach will prompt a superior utilization of the accessible classroom space for a given time table of courses at the university. Genetic Algorithm through Java programming languages were used in this study and aims at reducing the conflicts and optimizes the fitness. The algorithm considered the quantity of students in each class, class time, class size, time accessibility in each class and lecturer who in charge of the classes.

Keywords: Genetic Algorithm; Heuristics Approach; Timetable Scheduling

1. Introduction

Scheduling of timetable is an important thing that should be done in any academic institution or even un-academic institution also. This to make sure syllabus of the lesson can be completed on time or the scheduling project or activity done in the given time. According to dictionary, scheduling can be defined as a plan of procedure, usually written, for a proposed objective, especially with reference to the sequence of and time allotted for each item or operation necessary to its completion. According to Bethel et al. [1], scheduling is the phase of production control which rates the works in order of its priority and then provides for its release to the plant at the proper time and in the correct sequence. Based on Jha [2], the meeting of people will be the events and the timetable must specify the people need to be met, the location and also the time they need to have the meeting. The most and famous scheduling timetable is educational timetable. In 2007, based on Burke et al. [3], it can happen that probably, educational timetabling is the most widely studied. There are many types of scheduling problem such as job-shop scheduling [4], transportation scheduling [5], staffing

scheduling [6], sport scheduling [7] and home health care scheduling [8].

For this paper, a general problem of timetable problem in an academic institution will be solved. To schedule the timetable many constraints should be considered such as the size of class with the capacity of students, time for each slots and class, number of class in a day, subject involved and the lecturer as well. The most suitable approach to solve problem is a genetic algorithm (GA). Genetic algorithm is such a popular algorithm technique used to solve the scheduling problem. This genetic algorithm, was first invented from University of Michigan which is Prof. John Holland in 1975. Java programming is used to solve the problem.

2. Timetable Problem Description

There are many timetable problem in this world such as transport, nurse-rostering, sport, job shop and also timetable of student. To make a best timetable, all the conflicts arise should be well managed. The example of conflicts are the rooms, the lecturer or instructors, the size of room or capacity of the rooms, the subject, the class size, and sometimes the number of subject in a day also can be one of the conflict. Some students

consider only 4 class in a day while other consider 5. Usually the conflicts can be divided into two which are hard constraints and soft constraints.

2.1 Problem definition

Following are the participant in the timetable scheduling problem:

I is an instructor or lecturer i_1, i_2, i_3, i_4 and

MT is a Meeting Time mt_1, mt_2, mt_3, mt_4 and

C is a course $c_1, c_2, c_3, \dots, c_7$ and

R is a room r_1, r_2, r_3 and

D is a department of $dept1, dept2, dept3$

I is the lecturer involve in the timetable. The meeting time and the day of the class has been set in the program. The course also until 7 course and the available room is only 3 that has been set the capacity of each room.

2.2 Constraints Involved

In the timetable scheduling, there are a constraints should be followed which are:

- No two subjects in one class at the same time.
- Instructor having no more than one class in the same time
- No room should be double book
- All the allocated rooms must can hold the number of student

To get the feasible solution, the constraints should be followed. This paper should satisfy as many soft constraints as possible so that, the good quality of timetable can be obtained. The soft constraints generally is just to get the best timetable that can make all the students and also instructors satisfy and happiest.

This paper has constructed a lecturer timetable by using the genetic algorithm techniques. A natural chromosomes representation was chosen and genetic operators was also be build. A chromosome is made up of groups as genes.

3. Genetic Algorithm

Genetic algorithm is a method for solving both constrained and unconstrained optimization problems based on a natural selection process that mimics biological evolution. According to Michael D. V. [9], the simple genetic algorithm is definitely about two thing which are the search space and identifying the heuristic function. The algorithm repeatedly modifies a population of individual solution. The best point in the population approaches an optimal solution. A population is maintained and the fittest timetables are selected to form the basis of the next generation or iteration. In GA there are three basic operator which are selection, crossover and mutation. This three operator is applied to get the best results. The initialization of a population, the evaluation, and the genetic operator were implemented and controlled by using programming. The GA will assign course in what class, at what time and the instructor involved. Initial population is generated randomly. In the figure 1 below shows the genetic algorithm cycles.

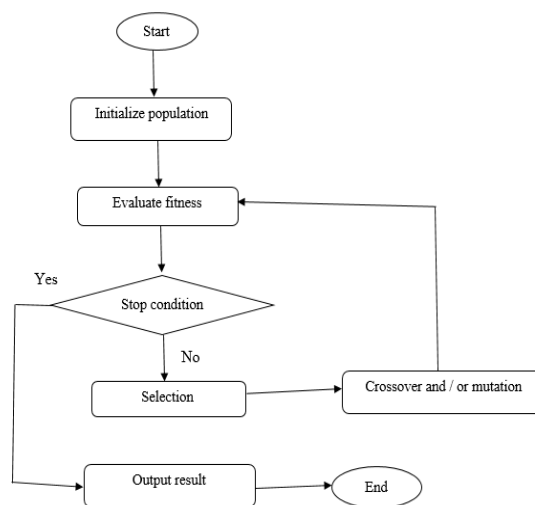


Fig. 1 Genetic Algorithm cycle

3.1 Chromosome Representation

The chromosome is usually representations as a bit string. All the possible information should be contains in the chromosome such as;

$$f : I \times MT \times C \times R \times D \rightarrow \{0,1\}$$

Where $f(i, mt, c, r, dept) = 1$ if and only if course c has I has an instructor in the given class and time. A gene in this representation may also be considered as an element with 5-dimensional matrix, with an allele value of 0 if false and 1 if true.

3.2 Initialize Population

A population of a solution is initialize randomly. For a timetable to be produced, the core course should be considered first. The course is selected in random order, and each course is assigned to a randomly chosen meeting time with the number of students in the course with the available room capacity without violated the constraints.

3.3 Evaluate Fitness

Fitness function is an objective function of problem. Fitness will give the value that then will specify the solution is the best solution or not. This evaluation of fitness also will make sure the looping process in genetic algorithm to be stopped or not. In others word, fitness will control and maintain the process flow of genetic algorithm. The option of the next generation will be control and maintain and will not go further from it. The fitness function for this timetable problem is the inverse of the number of students with class conflicts. This give a meaning, the lesser the number of students with class conflicts, the more fit the class is.

The fitness function can be;

$$f = \frac{1}{1 + x}$$

Where, x is a submission of conflicts or constraints.

$$x = I + MT + C + R + D$$

I is an instructor, the instructor will assign value of 0 in number if there is only i instructor at meeting time mt in class course c in room r from department $dept$. The value will be equal to 1, if there is clash of any meeting time mt , class course c , room r , department $dept$ or even with other lecturer.

This situation is same with other 4 criteria which are meeting time, class course, room and department. There should have no clash and the value is 0, if there are clash, value of 1 will be assign, show there is a conflict.

3.4 Selection

Selection is one of the Genetic Algorithm operators and it's usually will be applied first. According to [2], reproduction or selection usually will be the first operator being applied on a population. After the fitness value is calculated, the most fitter will be selected.

3.5 Crossover and Mutation

Crossover is a phase where there is a recombination of two string to get a better string. The crossover process being done to vary a chromosome from one generation to the next generation. Such an example of crossover is;

Parent 1: 1 1 1 0 0

Parent 2: 0 1 0 1 1

Choose a crossover point

Parent 1: 1 1 1 0 0

After crossover

Offspring 1: 1 1 0 1 1

Offspring 2: 0 1 1 0 0

At this point, the fitness value will be calculated, and if it's not fit enough, the mutation process will go through.

Mutation is a process of altering one or more gene values in chromosomes from its initial state. This phase will be used to maintain genetic diversity from one generation. Example of mutation process is:

Before: 1 1 0 0 1

After: 1 1 0 1 1

After the mutation process, the fitness value will be calculated, if its fitter, then it will stop and get the best solution, but if it's not fitter, the process will begin from evaluate to selection, crossover and mutation until it

satisfy stopping criteria or objective function achieved.

3.6 GA Implementation

The timetabling is performed in Java programming for this paper of GA. From this paper, the timetable produced is based on the best fitness value which has a low in conflicts.

4. Computational Results

The data is get from the simulation and not from the real data. The timetable can be represented as a class, dept, course, room, instructor, and meeting time. In the table 1, it shows the fitness value and conflicts of the program after some iteration. The table 1 explaining about list of possible result based on conflict and fitness value. The table start from less fitness value and higher conflict and stop with higher fitness value and lowest conflict. It gives a fitness of 1.0000 and 0 conflicts at the end of result. Therefore, the iteration stop as it's satisfy objective function and give the best result of timetable. While in table 2, showing the timetable with more proper arrangement and more easy to be seen with its separation. Table 2 explaining about the optimal solution with 0 conflict and fitness value of 1. The result show that all the constraints is satisfy The separation is made into course with number and maximum of students, room with capacity, the instructor's name and the meeting time as well.

Table 1 Solution showing fitness value and conflicts

Schedule	Classes [dept, class, room, instructor, meeting-time]	Fitness	Conflict
0	[MATH,C1,R2,I2,MT2],[MATH,C3,R1,I1,MT2],[EE,C2,R2,I2,MT3],[EE,C4,R3,I3,MT3],[EE,C5,R3,I4,MT2],[PHY,C6,R2,I1,MT4],[PHY,C7,R2,I2,MT1]	1.0000	0
1	[MATH,C1,R2,I2,MT4],[MATH,C3,R1,I1,MT2],[EE,C2,R2,I2,MT3],[EE,C4,R3,I3,MT3],[EE,C5,R3,I4,MT2],[PHY,C6,R1,I1,MT3],[PHY,C7,R2,I2,MT1]	0.5000	1

2	[MATH,C1,R2,I2,MT2],[MATH,C3,R1,I1,MT2],[EE,C2,R2,I2,MT3],[EE,C4,R3,I3,MT3],[EE,C5,R3,I4,MT2],[PHY,C6,R1,I1,MT3],[PHY,C7,R2,I2,MT1]	0.5000	1
3	[MATH,C1,R2,I2,MT4],[MATH,C3,R1,I1,MT2],[EE,C2,R2,I2,MT3],[EE,C4,R3,I3,MT3],[EE,C5,R3,I4,MT2],[PHY,C6,R2,I1,MT3],[PHY,C7,R2,I2,MT1]	0.5000	1
4	[MATH,C1,R2,I2,MT4],[MATH,C3,R1,I1,MT2],[EE,C2,R2,I2,MT3],[EE,C4,R1,I4,MT4],[EE,C5,R3,I4,MT2],[PHY,C6,R1,I1,MT3],[PHY,C7,R2,I2,MT1]	0.3333	2
5	[MATH,C1,R2,I2,MT2],[MATH,C3,R1,I1,MT2],[EE,C2,R2,I2,MT3],[EE,C4,R3,I3,MT3],[EE,C5,R3,I4,MT2],[PHY,C6,R1,I3,MT3],[PHY,C7,R2,I2,MT1]	0.3333	2
6	[MATH,C1,R2,I2,MT2],[MATH,C3,R1,I1,MT2],[EE,C2,R2,I2,MT3],[EE,C4,R1,I4,MT3],[EE,C5,R1,I4,MT1],[PHY,C6,R2,I1,MT3],[PHY,C7,R2,I2,MT1]	0.2500	3
7	[MATH,C1,R2,I2,MT2],[MATH,C3,R1,I1,MT2],[EE,C2,R2,I3,MT3],[EE,C4,R3,I3,MT2],[EE,C5,R3,I4,MT2],[PHY,C6,R3,I3,MT4],[PHY,C7,R3,I4,MT3]	0.2500	3
8	[MATH,C1,R2,I2,MT4],[MATH,C3,R1,I1,MT2],[EE,C2,R1,I2,MT3],[EE,C4,R1,I4,MT4],[EE,C5,R3,I4,MT2],[PHY,C6,R1,I1,MT3],[PHY,C7,R2,I2,MT1]	0.2000	4

Table 2 The timetable

Class	Dept	Course (number, max # of students)	Room (capacity)	Instructor (Id)	Meeting time (Id)
01	Math	325K (C1, 25)	R2(45)	Mr B (I2)	MWF 10:00 – 11:00 (MT2)
02	Math	462k (C3, 25)	R1(25)	Dr A (I1)	MWF 10:00 – 11:00 (MT2)
03	EE	319K (C2, 35)	R2(45)	Mr B (I2)	TTH 09:00 – 10:30 (MT3)
04	EE	464K (C4, 30)	R3(35)	Dr C (I3)	TTH 09:00 – 10:30 (MT3)
05	EE	360C (C5, 35)	R1(25)	Mrs D (I4)	MWF 10:00 – 11:00 (MT2)
06	Phy	303K (C6, 45)	R2(45)	Dr A (I1)	TTH 10:30 – 12:00 (MT4)
07	Phy	303L (C7, 45)	R2(45)	Mr B (I2)	MWF 09:00 – 10:00 (MT1)

From the table, it show that only three department are involve which are mathematics, physics and electrical engineering. The course also only 7 course involve with 4 instructor. All the three rooms available has been using with the time set.

Conclusions

This research has concentrated on a scheduling of timetable. This problem of scheduling being solve by using a genetic algorithm. This paper shown that genetic algorithm is the best choices to solve a problem regarding of student timetable. In this paper, the meeting and day has been set. The GA operators also is very helping in getting the best solutions and efficient. Selection, crossover and also mutation give the best solution and variation.

References

- [1] Lawrence L. & Bethel, (1956), *Industrial Organization and Management*, Mc Graw-Hill Publisher.
- [2] Jha S. K., (2014), Exam timetabling problem using genetic algorithm, *International Journal of Research in Engineering and Technology*, 3(5), 649-654.
- [3] Burke E. K., McCollum B., Meisels A., Petrovic S., & Qu, (2007), R. A graph-based hyper-heuristic for educational timetabling problem, *European Journal of Operational Research*, 176, 177-192.
- [4] Kacem I., (2003), scheduling flexible job-shops: a worst case analysis and an evolutionary algorithm, *International Journal of Computational Intelligence and Applications*, 3(4), 437-452.
- [5] Sauer J., Appelrath H.-J. (2000), Integrating transportation in a multi-site scheduling environment, *published in the Proceedings of the Hawai'i International Conference On System Sciences*, Maui.
- [6] Labidi M., Mrad M., Gharbi A., and Louly M. A. (2014), Scheduling IT staff at a bank: a mathematical programming approach, *The Scientific World Journal*.
- [7] Ribeiro C. C. (2012), Sports scheduling :problems and applications, *International Transactions In Operational Research*, 19 (1-2), pp. 201-226.
- [8] Yuan Z., Fugenschuh (2003), Home health care scheduling: A case study, *European Journal of Operational Research*, 151(3), pp. 447-460, 6.
- [9] Michael D. V., (1999), *The Simple Genetic Algorithm: Foundations and*

Theory, A Bradford Book, The MIT
Press, London, England.